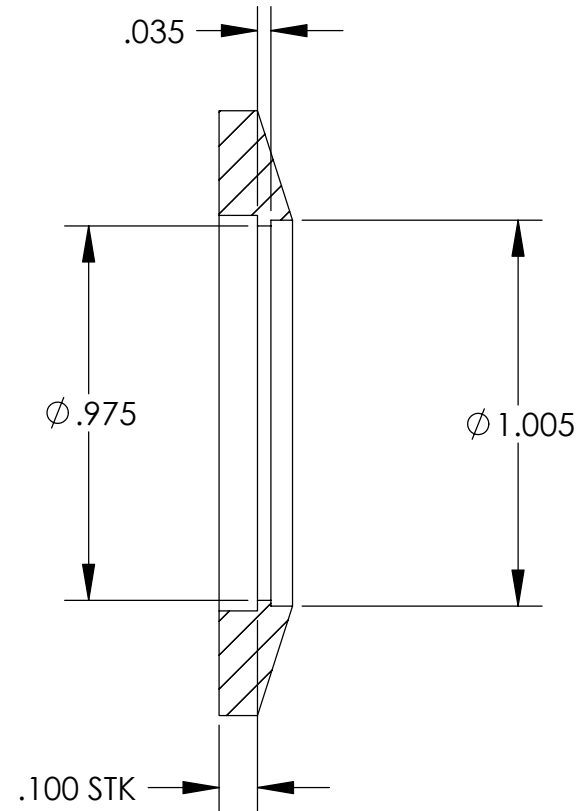
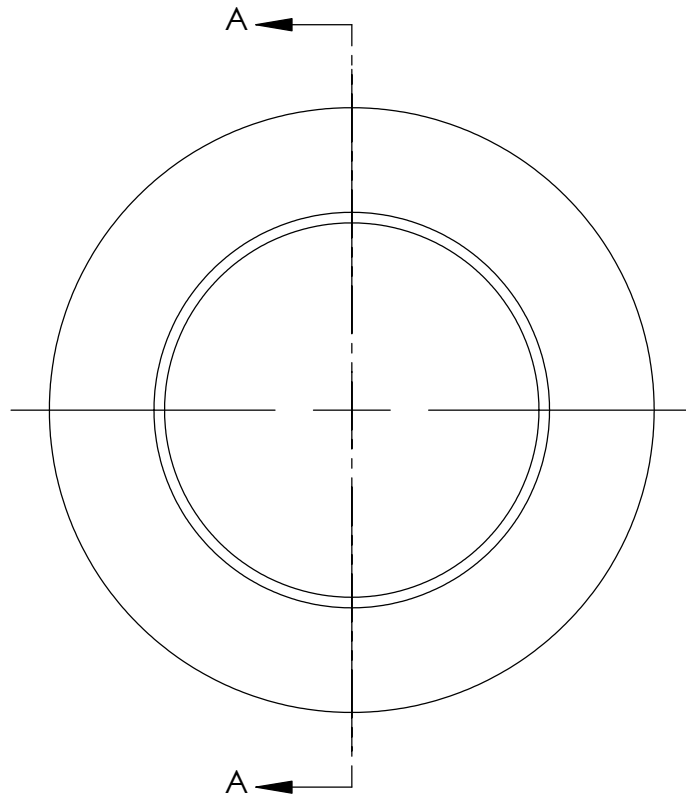


REVISIONS		
REV	DESCRIPTION	DATE



SECTION A-A

NOTES:
1. MAKE FROM NW 25 BORED FLANGE,
MDC P/N 713011.

UNLESS OTHERWISE SPECIFIED:						<div>High Precision Devices</div> <div>1668 Valtec Lane, Suite C, Boulder, Colorado 80301 Phone: (303) 447-2558 Fax: (303) 447-2548 Web Site: www.hpd-online.com</div>					
DIMENSIONS ARE IN INCHES DECIMAL TOLERANCES: .X ±.030 .XX ±.015 .XXX ±.005											
ANGULAR TOL: ± 1° SURFACE ROUGHNESS:63/√											
INTERNAL AND EXTERNAL SURFACE INTERSECTIONS SHALL BE UNIFORMLY FINISHED WITH CHAMFER .005/.010 X 45° OR RADIUS .005/.010. CHAMFER ALL THREADED HOLES 110° OF MAJOR DIAMETER X 45°						TITLE: <div>p02101-120 flange, NW25</div>					
						CONFIGURATION: 0-Default					
MATERIAL: 304/316/321 SST						SIZE	QTY PER ASSM: 1	SCALE: 2:1	SHEET 1 OF 1		REV
FINISH: N/A						A	DATE: 5/26/2004	DRAWN BY: C. Danaher		A	